

THE WHARF TERRACES

4/10 LINCOLN CRESCENT, WOOLLOOMOOLOO

*4 Bedrooms * 3 Bathrooms *2 Secure Parking *Storage



The Entertainment Terrace



The Master Bedroom



Award winning Master Ensuite



Heritage Flooring in Living area



Poliform Robe Room

Luxury Designer waterfront lifestyle living

Luxurious lifestyle harbour side position opposite the iconic Finger Wharf and directly on the Marina and waterfront, this stunning, single level executive apartment is house like in size and offers more than 250sqm of in/outdoor living including a magnificent 50sqm entertainment terrace plus two security car spaces and storage. A no-expense-spared refurbishment delivers designer interiors featuring open plan living/dining, a bespoke kitchen, 4 full sized bedrooms and chic bathrooms including two ensuites. A distinct highlight is the master bedroom which boasts a Poliform fitted dressing room and lavish ensuite as featured in a number of designer magazines.

Further heightening the level of sophistication are floor-to-ceiling windows and sliding doors facing the harbour and opening onto the very large entertainers terrace, custom furniture installations, reclaimed heritage Tallowwood floorboards, integrated European appliances (Gaggenau) and fully ducted air conditioning and a 3 burner Fireplace.

A perfect complement to this select address, the prestigious community provides residents with 24hr concierge and high level security, fully maintained manicured garden and surrounds and massive gymnasium, while the key lifestyle location is moments stroll to restaurants, Boy Charlton Pool, the Botanic Gardens, Art Gallery and CBD. Perfect for downsizers who are looking for a fantastic quality of lifestyle and convenience to everything that is Sydney.

***A private marina berth on separate title is also available if desired.*

THE WHARF TERRACES 4/10 LINCOLN CRESCENT, WOOLLOOMOOLOO

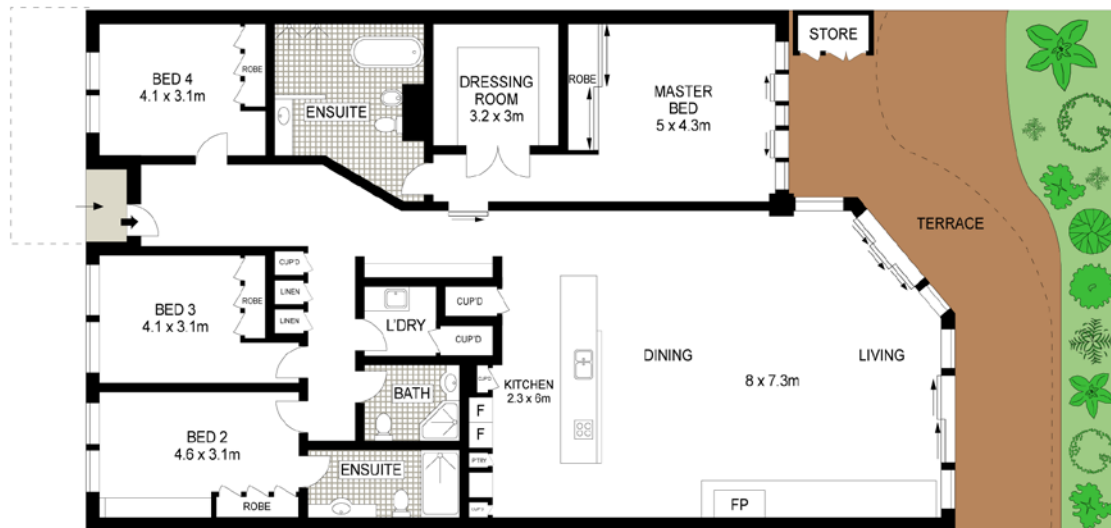
*4 Bedrooms * 3 Bathrooms *2 Secure Parking *Storage



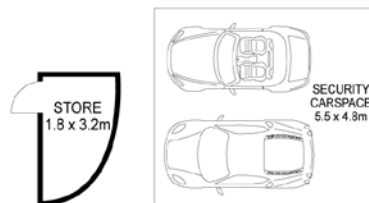
Location on the Harbour and Marina



European Kitchen and Dining



GROUND FLOOR



Scale in metres. Indicative only. Dimensions are approximate. All information contained herein is gathered from sources we believe to be reliable. However, we cannot guarantee its accuracy and interested persons should rely on their own enquiries.



VIEWING: By appointment

FOR SALE: \$3.6m

Terry McGrath 0418 24 18 24

Email: terry@mcgrathretail.com

Levies: \$4500 pq (approx.)

Water: \$157 pq

Rates : \$353 pq

